

## **RULES:**

- Stay on the trails
- Leave all plants and animals undisturbed for others to enjoy, no collecting
- No hunting, fishing, camping, jogging, bicycling, smoking or fires allowed
- Leave all pets at home, including horses
- Motorized vehicles are not permitted beyond the parking lot except for disabled persons' access
- Carry your trash out with you
- Use caution when crossing North River Road to the floodplain trails

### ***Become a member today***

Neale Woods is owned and operated by Fontenelle Forest, a privately funded non-profit organization. Become a member today for 12 months access to Neale Woods and Fontenelle Forest Nature Center. Visit [www.fontenelleforest.org](http://www.fontenelleforest.org) or stop by the Visitor Services Desk at Fontenelle Forest Nature Center.

Fontenelle Forest  
1111 Bellevue Blvd. N.  
Bellevue, NE 68005  
402-731-3140



## **Welcome to Neale Woods!**

This 600-acre conservation area is home to abundant plant and animal life. We hope that you enjoy your forest and prairie walk.

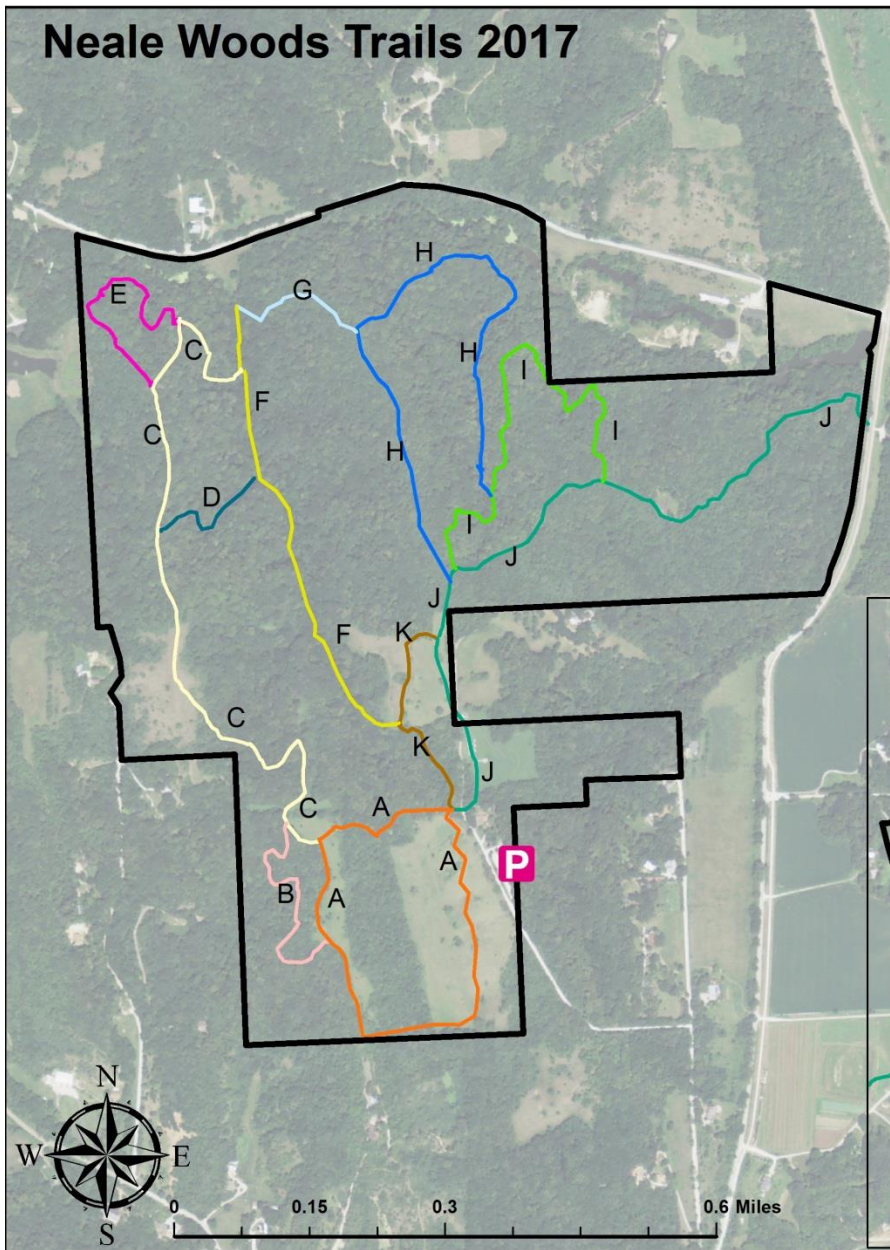
Neale Woods  
14323 Edith Marie Ave.  
Omaha, NE 68112

FONTENELLE  FOREST

# Neale Woods Trails 2017

## Legend

- P Neale Woods Parking
- Neale Woods Property Boundary
- A - Gifford Trail
- B - Fox Trail
- C - Hilltop
- D - Owl Trail
- E - Maidenhair Trail
- F - Raccoon Hollow
- G - Deer Trail
- H - Settlers Trail
- I - Columbine Trail
- J - Neale Trail
- K - Wagon Trail



# Neale Woods - Krim Property Trails 2017

## Legend

- P Krim Parking
- Neale Woods - Krim Property Boundary
- J - Neale Trail
- L - History Trail
- M - Missouri River Ecology Trail

